

QUICK START GUIDE

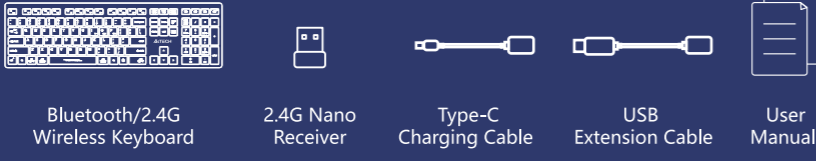


FBX50C

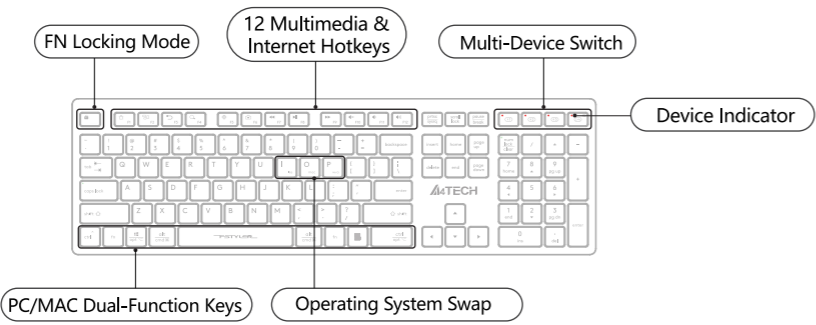
Bluetooth® 2.4G

FSTYLER COLLECTION

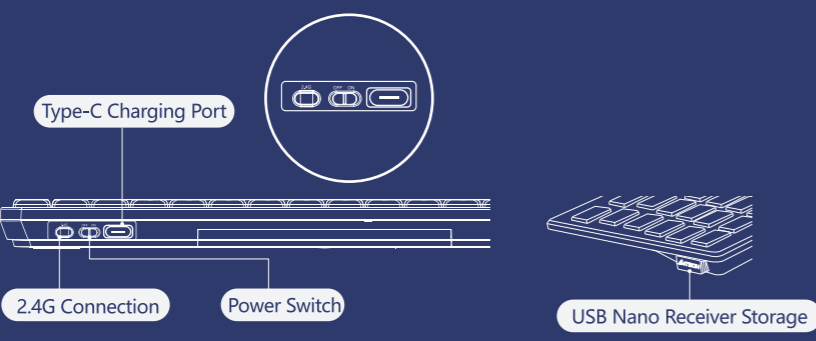
WHAT'S IN THE BOX



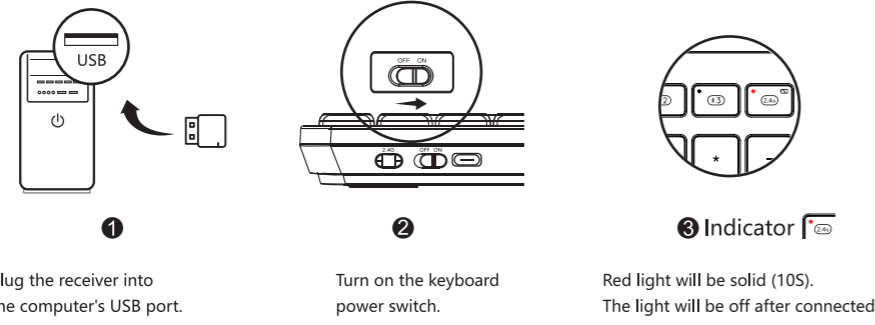
THE FRONT



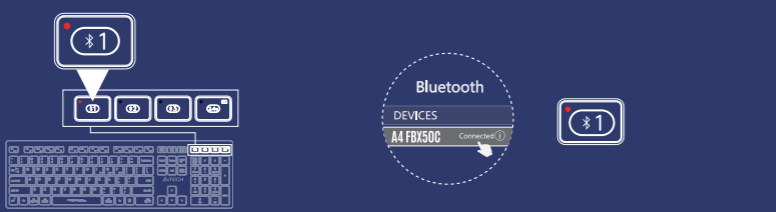
THE FLANK / BOTTOM



CONNECTING 2.4G DEVICE

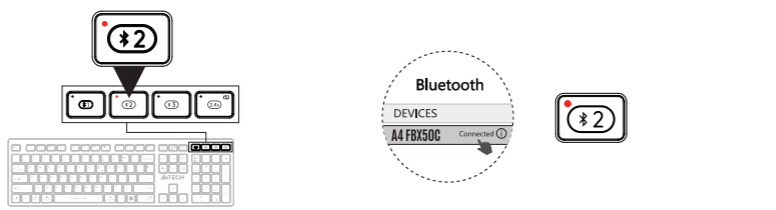


CONNECTING BLUETOOTH DEVICE 1 (For Mobile Phone/Tablet/Laptop)



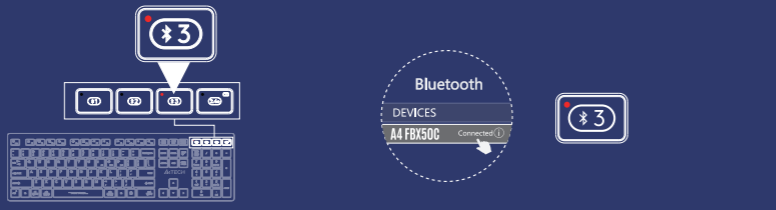
- Short-press **[BT]** Bluetooth device 1 and light up in red. Long-press **[3S]** for 3S and red light flashes slowly when pairing.
- Choose [A4 FBX50C] from your Bluetooth device. The indicator will be solid red for a while then light off after the keyboard is connected.

CONNECTING BLUETOOTH DEVICE 2 (For Mobile Phone/Tablet/Laptop)



- Short-press **[BT]** Bluetooth device 2 and light up in red. Long-press **[3S]** for 3S and red light flashes slowly when pairing.
- Choose [A4 FBX50C] from your Bluetooth device. The indicator will be solid red for a while then light off after the keyboard is connected.

CONNECTING BLUETOOTH DEVICE 3 (For Mobile Phone/Tablet/Laptop)



- Short-press **[BT]** Bluetooth device 3 and light up in red. Long-press **[3S]** for 3S and red light flashes slowly when pairing.
- Choose [A4 FBX50C] from your Bluetooth device. The indicator will be solid red for a while then light off after the keyboard is connected.

OPERATING SYSTEM SWAP

Windows / Android is default system layout.

System	Shortcut [Long-Press for 3S]	Device / Layout Indicator
iOS	[fn] + [ios]	Light will be off after flashing.
Mac	[fn] + [mac]	
Windows, Chrome, Android & HarmonyOS	[fn] + [P/w/a]	

Note: The layout you used last time will be remembered. You can switch the layout by following the above step.

INDICATOR (For Mobile Phone/Tablet/Laptop)

Indicator	Red Light	Red Light	Red Light	Red Light
Multi-Device Switch	[C1]	[C1]	[C2]	[C3]
Device Switch: Short-Press for 1S	Solid Light 10S	Solid Light 5S		
Pair Device: Long-Press for 3S	No Need to Pair	Pairing: Flashes Slowly Connected: Solid Light 10S		

FN MULTIMEDIA KEY COMBINATION SWITCH

FN Mode: You can lock & unlock Fn mode by short pressing FN + ESC by turn.



OTHER FN SHORTCUTS SWITCH

Shortcuts	Windows	Android	Mac / iOS
[fn] + [delete]	Pause	Pause	Pause
[fn] + [▲]	Device Screen Brightness +	Device Screen Brightness +	Device Screen Brightness +
[fn] + [▼]	Device Screen Brightness -	Device Screen Brightness -	Device Screen Brightness -
[fn] + [backspace]		Screen Lock	Screen Lock (iOS Only)
[fn] + [enter]	Scroll Lock	Scroll Lock	

Note: The final function refer to the actual system.

DUAL-FUNCTION KEY

Multi-System Layout

Keyboard Layout	Windows / Android (W / A)	iOS / Mac (ios / mac)
[fn] + [I/O/P]	Switching Steps: ① Choose iOS layout by pressing Fn+I ② Choose MAC layout by pressing Fn+O ③ Choose Windows / Android layout by pressing Fn+P.	
[ctrl]	Ctrl	Control ^
[opt]	Start	Option
[alt]	Alt	Command
[alt]	Alt (Right)	Command
[ctrl]	Ctrl (Right)	Option

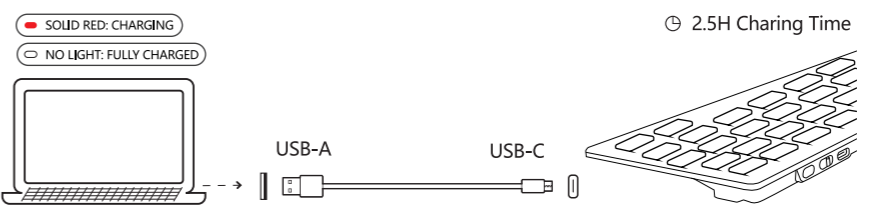
LOW BATTERY INDICATOR



Flashing Red light indicates when the battery is below 10%.

USB TYPE-C RECHARGEABLE

Warning: Limite charge with 5V (Voltage)



Built-in 300mAh rechargeable lithium battery, it can be used for up to 3-5 months when fully charged. **Battery life may vary based on user and computing conditions.

SPECIFICATIONS

Model: FBX50C
 Connection: Bluetooth / 2.4G
 Operating Range: 5-10 M
 Multi-Device: 4 Devices (Bluetooth x 3, 2.4G x 1)
 Layout: Windows | Android | Mac | iOS
 Battery: 300mAh Lithium Battery
 Receiver: Nano USB Receiver
 Includes: Keyboard, Nano Receiver, USB Extension Cable, Type-C Charging Cable, User Manual
 System Requirements: Windows / Mac / iOS / Chrome / Android / Harmony OS...

Q & A

- Question** How to switch layout under different system?
Answer You can switch layout by pressing Fn + I / O / P under Windows | Android | Mac | iOS.
- Question** Does the layout can be remembered?
Answer The layout you used last time will be remembered.
- Question** How many devices can be connected?
Answer Interchange and connect up to 4 devices at the same time.
- Question** Does the keyboard remember the connected device?
Answer The device you connected last time will be remembered.
- Question** How can I know the current device is connected or not?
Answer When you turn on your device, the device indicator will be solid. (disconnected: 5S, connected: 10S)
- Question** How to switch between connected Bluetooth device 1-3?
Answer By pressing the Bluetooth individual buttons ([C1] [C2] [C3]) at the keyboard's top right corner.

WARNING STATEMENT

- The following actions may/will cause damages to the product.
- To disassemble, bump, crush, or throw into the fire, you may cause irrefutable damages in event of the lithium battery leakage.
 - Do not expose under the strong sunlight.
 - Please obey all local laws when discarding the batteries, if possible please recycle them. Do not dispose of it as household garbage, it may cause a fire or an explosion.
 - Please try to avoid charging in the environment below 0°C.
 - Do not remove or replace the battery.
 - Please use the charging cable included in the package to charge the product.
 - Do not use any equipment with voltage exceeding 5V for charging.

EST. 1987
A4TECH

FSTYLER
COLLECTION



www.a4tech.com



Scan for E-Manual