

# QUICK START GUIDE

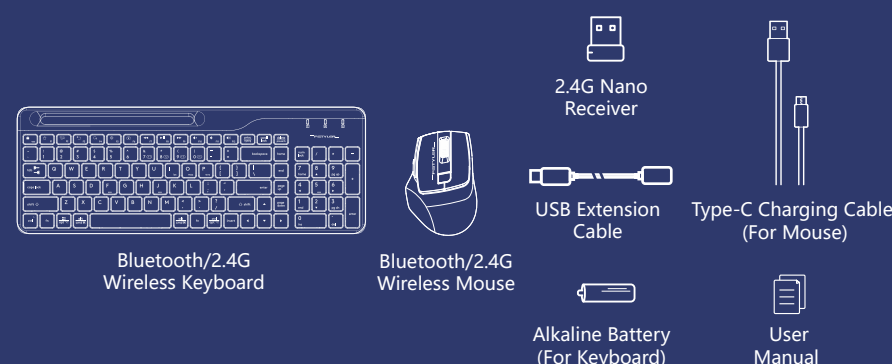


FB2535C (S)

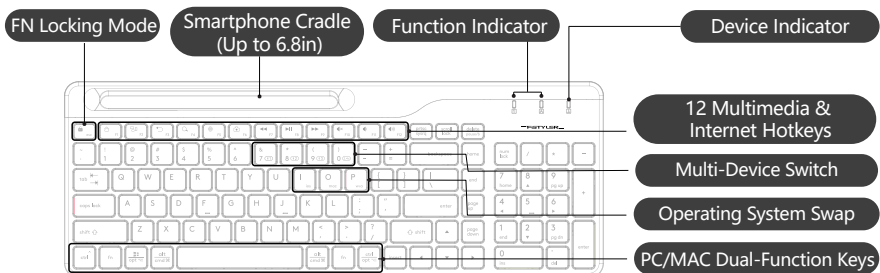
Bluetooth® 2.4G

FSTYLER COLLECTION

## WHAT'S IN THE BOX



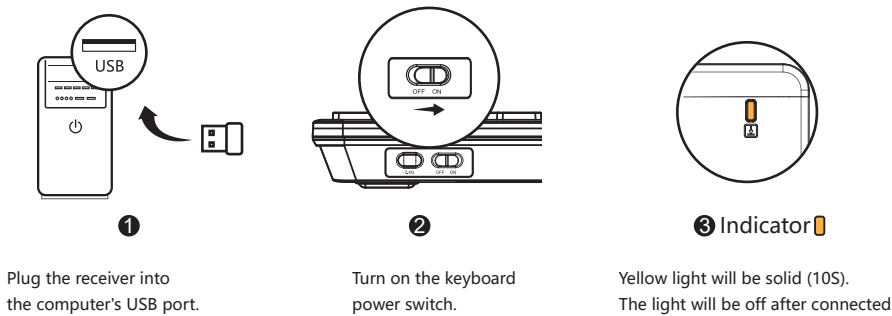
## KNOW YOUR KEYBOARD



## THE FLANK / BOTTOM

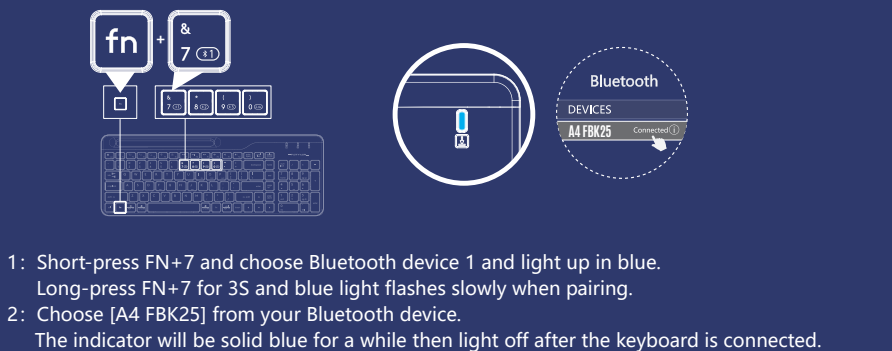


## CONNECTING 2.4G DEVICE

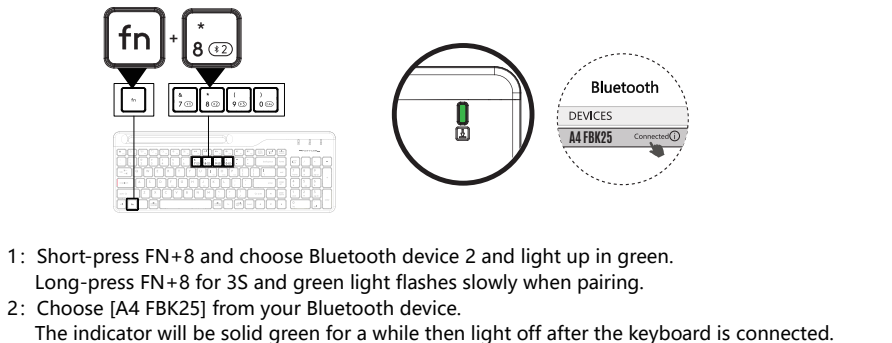


Note: USB extension cable is recommended to connect with Nano receiver. (Make sure the keyboard is closed to the receiver within 30 cm)

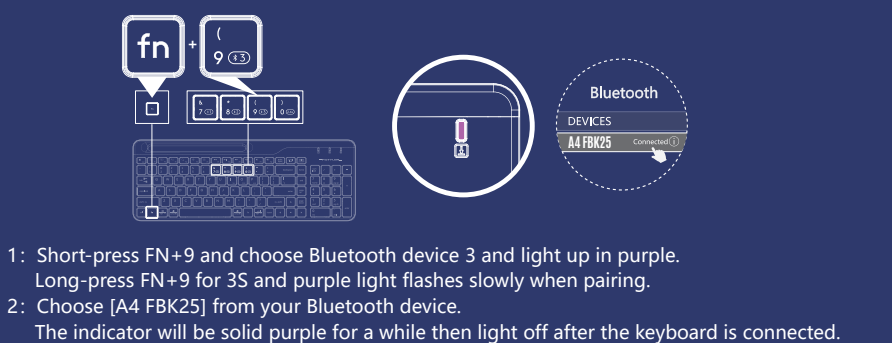
## CONNECTING BLUETOOTH DEVICE 1 (For Mobile Phone/Tablet/Laptop)



## CONNECTING BLUETOOTH DEVICE 2 (For Mobile Phone/Tablet/Laptop)



## CONNECTING BLUETOOTH DEVICE 3 (For Mobile Phone/Tablet/Laptop)



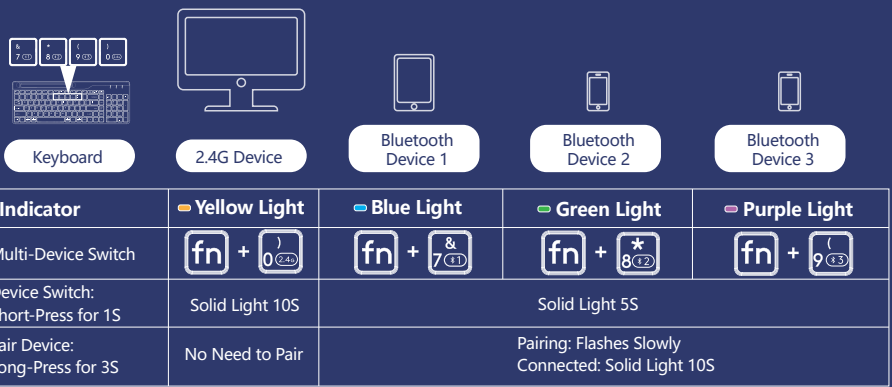
## OPERATING SYSTEM SWAP

Windows / Android is default system layout.

System	Shortcut [Long-Press for 3S]	Device / Layout Indicator
iOS	fn + [ios]	Light will be off after flashing.
Mac	fn + [mac]	
Windows, Chrome, Android & HarmonyOS	fn + [PWA]	

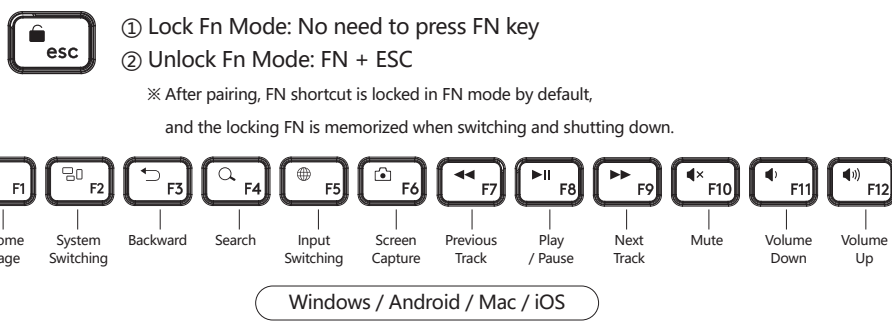
Note: The layout you used last time will be remembered. You can switch the layout by following the above step.

## INDICATOR (For Mobile Phone/Tablet/Laptop)



## FN MULTIMEDIA KEY COMBINATION SWITCH

FN Mode: You can lock & unlock Fn mode by short pressing FN + ESC by turn.



## OTHER FN SHORTCUTS SWITCH

Shortcuts	Windows	Android	Mac / iOS
fn + [delete]	Pause	Pause	Pause
fn + [up]	Device Screen Brightness +	Device Screen Brightness +	Device Screen Brightness +
fn + [down]	Device Screen Brightness -	Device Screen Brightness -	Device Screen Brightness -
fn + [backspace]		Screen Lock	Screen Lock (iOS Only)
fn + [enter]	Scroll Lock	Scroll Lock	

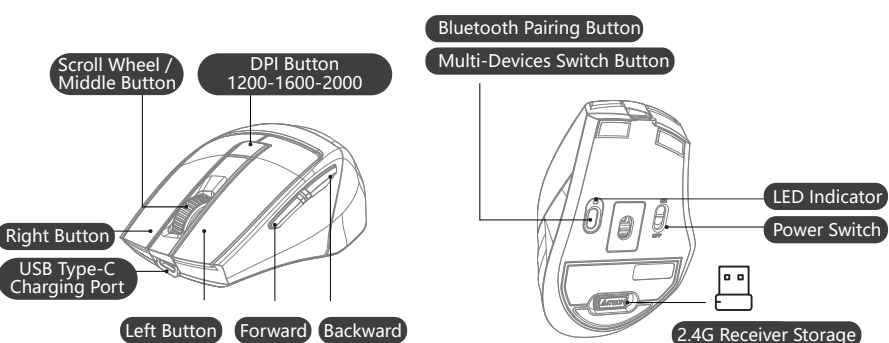
Note: The final function refer to the actual system.

## DUAL-FUNCTION KEY

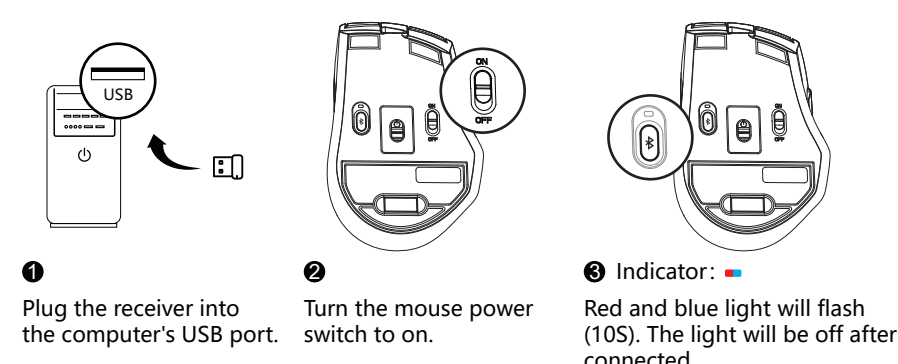
Multi-System Layout

Keyboard Layout	Windows / Android ( W / a )	iOS / Mac ( ios / mac )
fn + [ios] [mac] [PWA]	Switching Steps: ① Choose iOS layout by pressing FN+I. ② Choose MAC layout by pressing FN+O ③ Choose Windows / Android layout by pressing FN+P.	
ctrl + [up]	Ctrl	Control ^
opt + [start]	Start	Option
alt + [cmd]	Alt	Command
alt + [md]	Alt (Right)	Command
ctrl + [opt]	Ctrl (Right)	Option

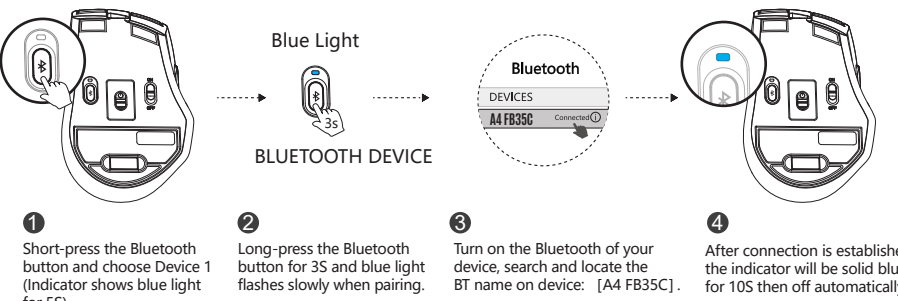
## KNOW YOUR MOUSE



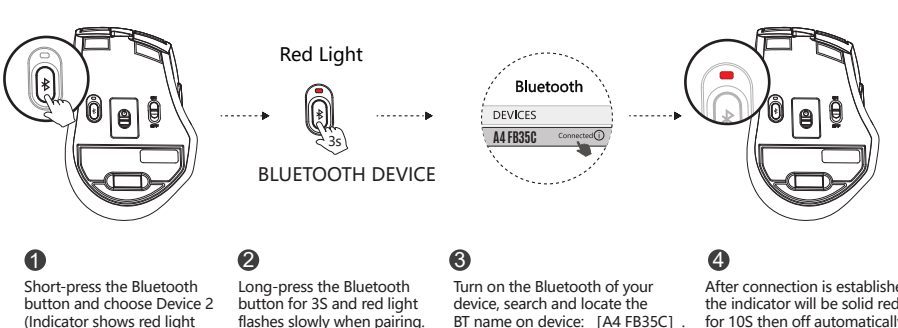
## CONNECTING 2.4G DEVICE



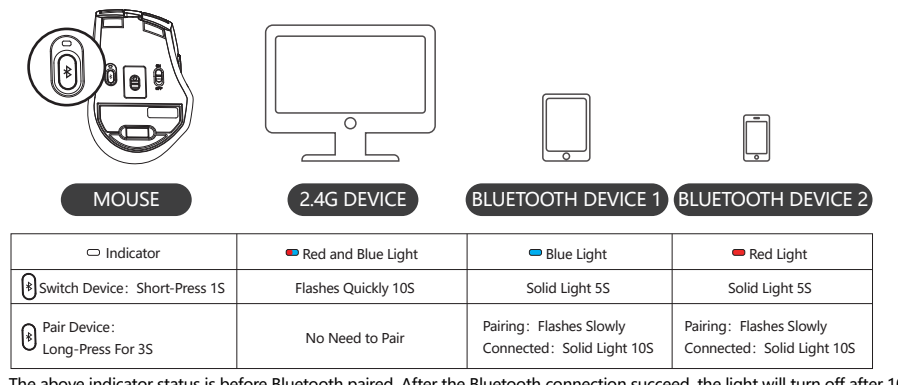
## CONNECTING BLUETOOTH DEVICE 1 (For Mobile Phone/Tablet/Laptop)



## CONNECTING BLUETOOTH DEVICE 2 (For Mobile Phone/Tablet/Laptop)

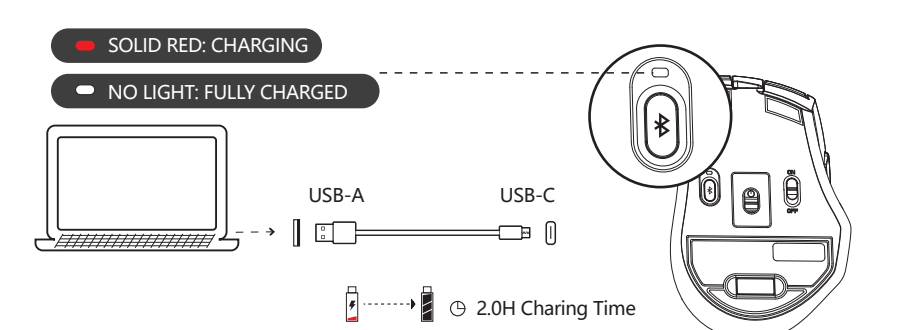


## INDICATOR

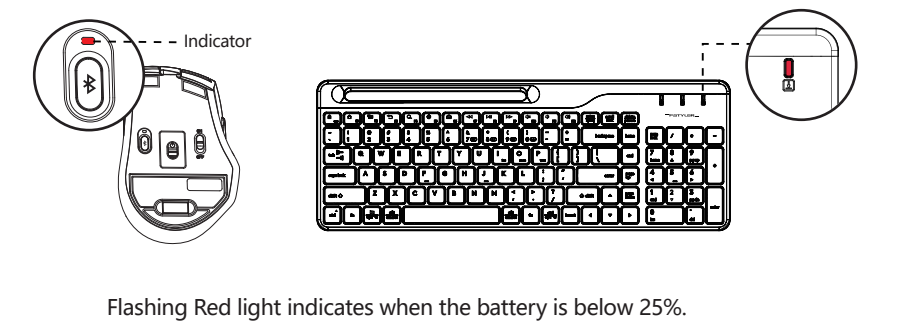


The above indicator status is before Bluetooth paired. After the Bluetooth connection succeed, the light will turn off after 10S.

## CHARGING & INDICATOR



## LOW BATTERY INDICATOR



## Q & A (For Mouse)

- Question** How many total devices can be connected at a time?  
**Answer** Interchange and connect up to 3 devices at the same time. 2 Devices with Bluetooth + 1 Device with 2.4G Hz.
- Question** Does the mouse remember connected devices after power off?  
**Answer** The mouse will automatically remember and connect last device. You may switch the devices as you choose to.
- Question** How do I know what device is currently connected to?  
**Answer** When the power is turned on, the indicator light will be displayed for 10S.
- Question** How to switch connected Bluetooth devices?  
**Answer** Repeat the procedure of connecting Bluetooth devices.

## Q & A (For Keyboard)

- Question** How to switch layout under different system?  
**Answer** You can switch layout by pressing FN + I / O / P under Windows | Android | Mac | iOS.
- Question** Does the layout can be remembered?  
**Answer** The layout you used last time will be remembered.
- Question** How many devices can be connected?  
**Answer** Interchange and connect up to 4 devices at the same time.

## Q & A (For Keyboard)

- Question** Does the keyboard remember the connected device?  
**Answer** The device you connected last time will be remembered.
- Question** How can I know the current device is connected or not?  
**Answer** When you turn on your device, the device indicator will be solid. (disconnected: 5S, connected: 10S)
- Question** How to switch between connected Bluetooth device 1-3?  
**Answer** By pressing FN + Bluetooth shortcut ( 7 - 9 ).

## SPECIFICATIONS

Connection: Bluetooth / 2.4G	Mouse Model: FB35C / FB35CS (Silent Click Version)
Operating Range: 5~10 M	Resolution: 1200-1600-2000 DPI
Receiver: Nano USB Receiver	Multi-Device: 3 Devices (Bluetooth x 2, 2.4G x 1)
Keyboard Model: FBK25	Battery: Rechargeable Lithium Battery
Multi-Device: 4 Devices (Bluetooth x 3, 2.4G x 1)	Charging Time: About 2.0 Hours
Layout: Windows   Android   Mac   iOS	Buttons No.: 6
Battery: 1 AA Alkaline Battery	System Platform: Windows / Mac / iOS / Chrome / Android / Harmony OS...
Battery Life: about 650H (12 Months)	

## WARNING STATEMENT

- The following actions may/will cause damages to the product.
- To disassemble, bump, crush, or throw into the fire, you may cause irrefutable damages in event of the lithium battery leakage.
  - Do not expose under the strong sunlight.
  - Please obey all local laws when discarding the batteries, if possible please recycle them. Do not dispose of it as household garbage, it may cause a fire or an explosion.
  - Please try to avoid charging in the environment below 0°C.
  - Do not remove or replace the lithium battery.
  - Please use the charging cable included in the package to charge the product.
  - Do not use any equipment with voltage exceeding 10V to charge the device.

EST. 1987  
A4TECH®

FSTYLER  
COLLECTION



www.a4tech.com



Scan for E-Manual