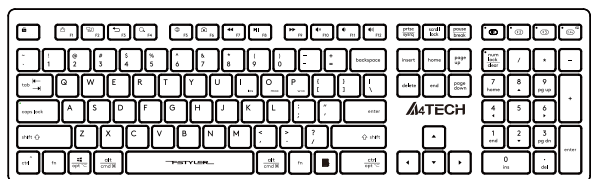


# QUICK START GUIDE



FBX50C

Bluetooth® 2.4G

F-STYLER  
COLLECTION

## WHAT'S IN THE BOX

Bluetooth® 2.4G  
Wireless Keyboard

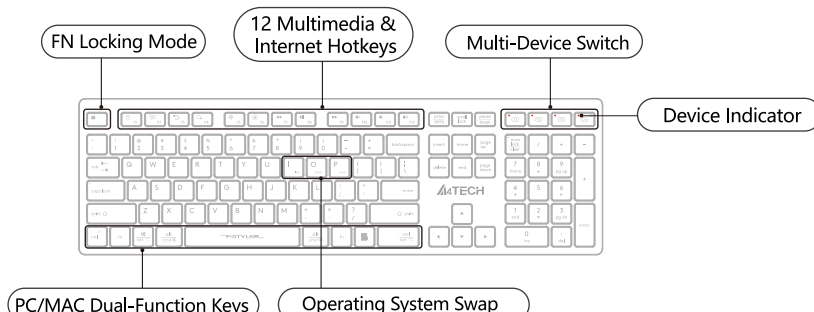
2.4G Nano  
Receiver

Type-C  
Charging Cable

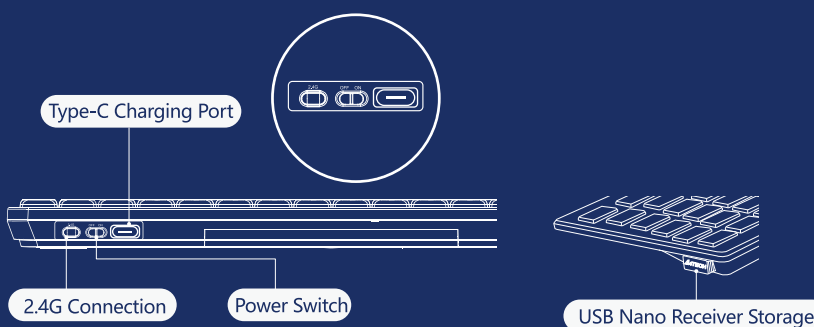
USB  
Extension Cable

User  
Manual

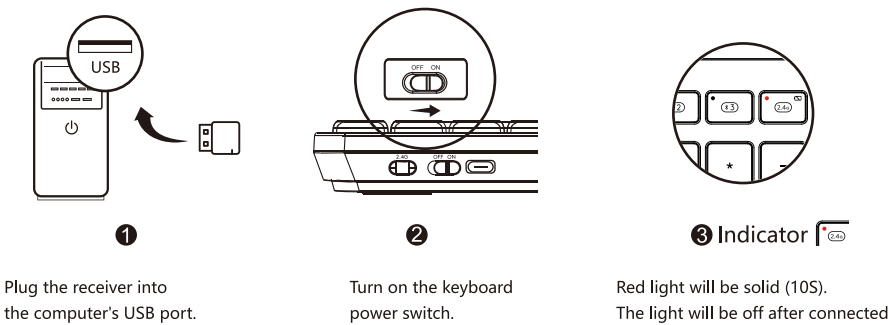
## THE FRONT



## THE FLANK / BOTTOM



## CONNECTING 2.4G DEVICE

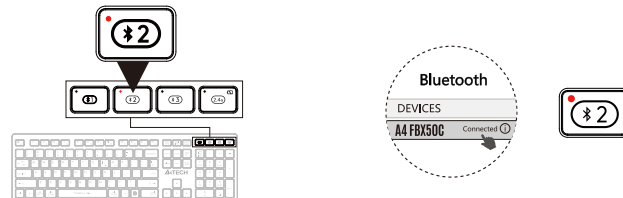


Note: USB extension cable is recommended to connect with Nano receiver. (Make sure the keyboard is closed to the receiver within 30 cm)

## CONNECTING BLUETOOTH DEVICE 1 (For Mobile Phone/Tablet/Laptop)



## CONNECTING BLUETOOTH DEVICE 2 (For Mobile Phone/Tablet/Laptop)



## CONNECTING BLUETOOTH DEVICE 3 (For Mobile Phone/Tablet/Laptop)



## OPERATING SYSTEM SWAP

Windows / Android is default system layout.

System	Shortcut [Long-Press for 3S]	Device / Layout Indicator
iOS	fn + ios	Light will be off after flashing.
Mac	fn + mac	
Windows, Chrome, Android & HarmonyOS	fn + P/a	

Note: The layout you used last time will be remembered. You can switch the layout by following the above step.

## INDICATOR (For Mobile Phone/Tablet/Laptop)

Indicator	Red Light	Red Light	Red Light	Red Light
Multi-Device Switch	(C2)	(C1)	(C2)	(C3)
Device Switch: Short-Press for 1S	Solid Light 10S	Solid Light 5S		
Pair Device: Long-Press for 3S	No Need to Pair	Pairing: Flashes Slowly Connected: Solid Light 10S		

## FN MULTIMEDIA KEY COMBINATION SWITCH

FN

FN Mode: You can lock & unlock Fn mode by short pressing FN + ESC by turn.



- Lock Fn Mode: No need to press FN key
- Unlock Fn Mode: FN + ESC

※ After pairing, FN shortcut is locked in FN mode by default,  
and the locking FN is memorized when switching and shutting down.

F1	F2	F3	F4	F5	F6	F7	F8	F9	F10	F11	F12
Home Page	System Switching	Backward	Search	Input Switching	Screen Capture	Previous Track	Play / Pause	Next Track	Mute	Volume Down	Volume Up
Windows / Android / Mac / iOS											

## OTHER FN SHORTCUTS SWITCH

Shortcuts	Windows	Android	Mac / iOS
fn + delete (insert)	Pause	Pause	Pause
fn + ▲	Device Screen Brightness +	Device Screen Brightness +	Device Screen Brightness +
fn + ▼	Device Screen Brightness -	Device Screen Brightness -	Device Screen Brightness -
fn + backspace		Screen Lock	Screen Lock (iOS Only)
fn + enter (lock)	Scroll Lock	Scroll Lock	

Note: The final function refer to the actual system.

## DUAL-FUNCTION KEY

OS

Multi-System Layout

Keyboard Layout	Windows / Android ( W / a )	iOS / Mac ( ios / mac )
fn + I ios, O mac, P w/a	Switching Steps: ① Choose iOS layout by pressing Fn+I. ② Choose MAC layout by pressing Fn+O. ③ Choose Windows / Android layout by pressing Fn+P.	
ctrl ^	Ctrl	Control ^
opt ⌘	Start	Option
alt cmd	Alt	Command
alt md	Alt (Right)	Command
ctrl opt	Ctrl (Right)	Option

## LOW BATTERY INDICATOR

Light

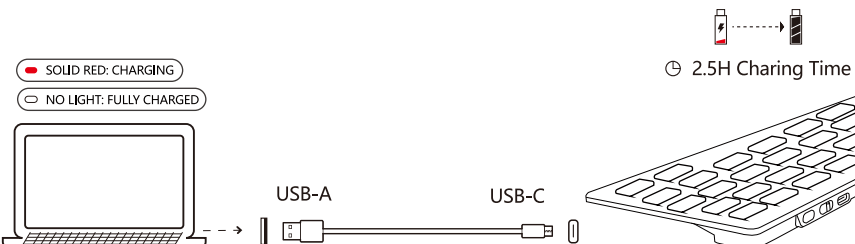


Flashing Red light indicates when the battery is below 10%.

## USB TYPE-C RECHARGEABLE

Charging

▲ Warning: Limite charge with 5V (Voltage)



Built-in 300mAh rechargeable lithium battery, it can be used for up to 3~5 months when fully charged.  
\*\*Battery life may vary based on user and computing conditions.

## SPECIFICATIONS

Spec

Model: FBX50C  
Connection: Bluetooth / 2.4G  
Operating Range: 5~10 M  
Multi-Device: 4 Devices (Bluetooth x 3, 2.4G x 1)  
Layout: Windows | Android | Mac | iOS  
Battery: 300mAh Lithium Battery  
Receiver: Nano USB Receiver  
Includes: Keyboard, Nano Receiver, USB Extension Cable, Type-C Charging Cable, User Manual  
System Requirements: Windows / Mac / iOS / Chrome / Android / Harmony OS...

## Q & A

Q&A

- Question** How to switch layout under different system?  
**Answer** You can switch layout by pressing Fn + I / O / P under Windows | Android | Mac | iOS.
- Question** Does the layout can be remembered?  
**Answer** The layout you used last time will be remembered.
- Question** How many devices can be connected?  
**Answer** Interchange and connect up to 4 devices at the same time.

- Question** Does the keyboard remember the connected device?  
**Answer** The device you connected last time will be remembered.
- Question** How can I know the current device is connected or not?  
**Answer** When you turn on your device, the device indicator will be solid.  
(disconnected: 5S, connected: 10S)
- Question** How to switch between connected Bluetooth device 1-3?  
**Answer** By pressing the Bluetooth individual buttons ( C1 C2 C3 ) at the keyboard's top right corner.

## WARNING STATEMENT

Warning

- The following actions may/will cause damages to the product.
- To disassemble, bump, crush, or throw into the fire, you may cause irrefutable damages in event of the lithium battery leakage.
  - Do not expose under the strong sunlight.
  - Please obey all local laws when discarding the batteries, if possible please recycle them.  
Do not dispose of it as household garbage, it may cause a fire or an explosion.
  - Please try to avoid charging in the environment below 0°C.
  - Do not remove or replace the battery.
  - Please use the charging cable included in the package to charge the product.
  - Do not use any equipment with voltage exceeding 5V for charging.

EST. 1987  
A4TECH®

F-STYLER  
COLLECTION



www.a4tech.com



Scan for E-Manual