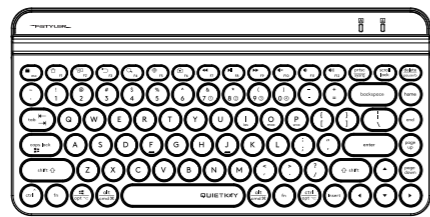


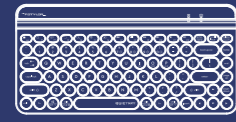
QUICK START GUIDE



FBK30



WHAT'S IN THE BOX



Bluetooth/2.4G Wireless Keyboard



2.4G Nano Receiver



USB Extension Cable

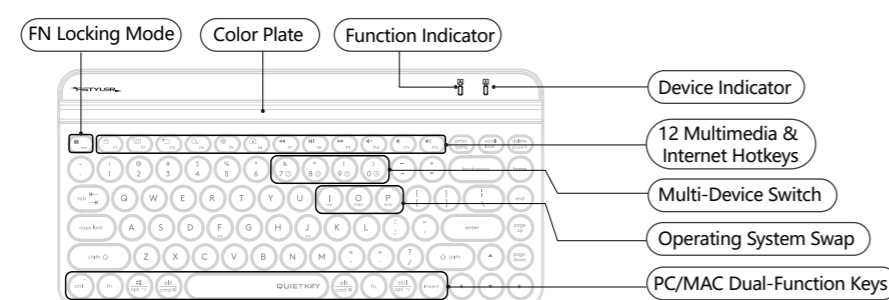


Alkaline Battery

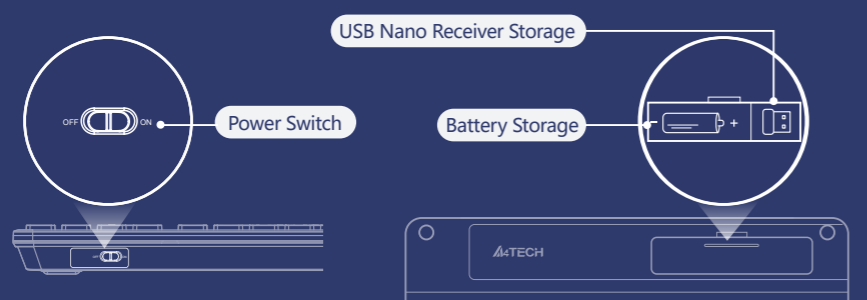


User Manual

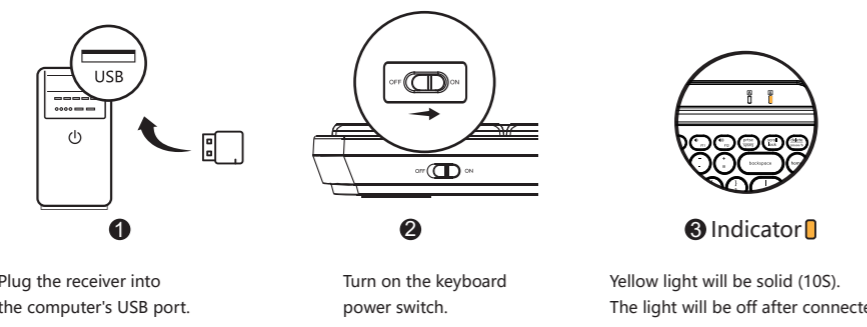
THE FRONT



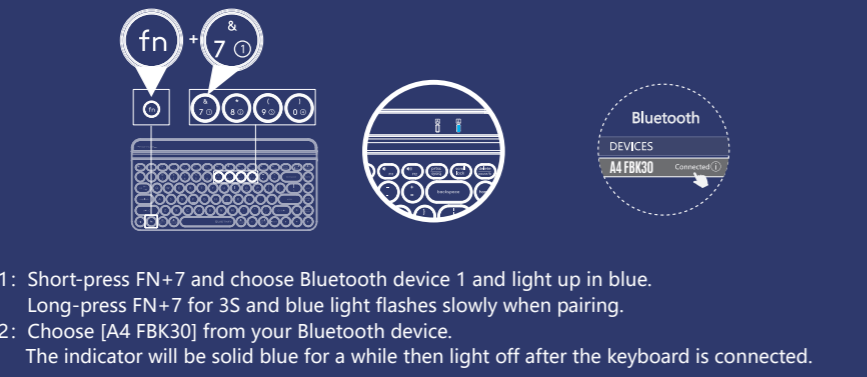
THE FLANK / BOTTOM



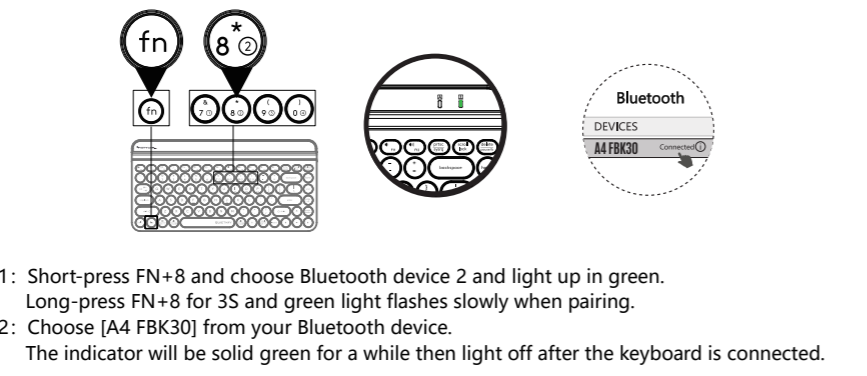
CONNECTING 2.4G DEVICE



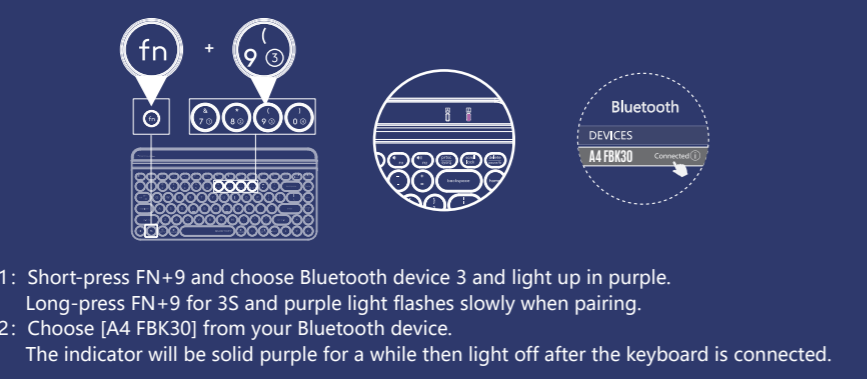
CONNECTING BLUETOOTH DEVICE 1 (For Mobile Phone/Tablet/Laptop)



CONNECTING BLUETOOTH DEVICE 2 (For Mobile Phone/Tablet/Laptop)



CONNECTING BLUETOOTH DEVICE 3 (For Mobile Phone/Tablet/Laptop)



OPERATING SYSTEM SWAP

Windows / Android is default system layout.

System	Shortcut [Long-Press for 3S]	Device / Layout Indicator
iOS	fn + ios	Light will be off after flashing.
Mac	fn + mac	
Windows, Chrome, Android & HarmonyOS	fn + P/w/a	

Note: The layout you used last time will be remembered. You can switch the layout by following the above step.

INDICATOR (For Mobile Phone/Tablet/Laptop)

Indicator	Yellow Light	Blue Light	Green Light	Purple Light
Multi-Device Switch	fn + ios	fn + 7	fn + 8	fn + 9
Device Switch: Short-Press for 1S	Solid Light 10S		Solid Light 5S	
Pair Device: Long-Press for 3S	No Need to Pair		Pairing: Flashes Slowly Connected: Solid Light 10S	

FN MULTIMEDIA KEY COMBINATION SWITCH

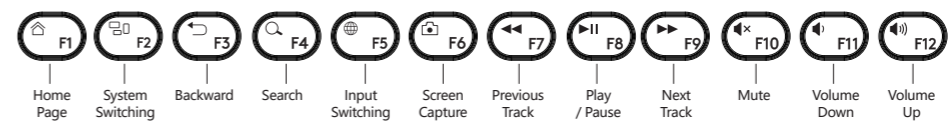


FN Mode: You can lock & unlock Fn mode by short pressing FN + ESC by turn.



- Lock Fn Mode: No need to press FN key
- Unlock Fn Mode: FN + ESC

※ After pairing, FN shortcut is locked in FN mode by default, and the locking FN is memorized when switching and shutting down.



Windows / Android / Mac / iOS

OTHER FN SHORTCUTS SWITCH

Shortcuts	Windows	Android	Mac / iOS
fn + [pause]	Pause	Pause	Pause
fn + [brightness up]	Device Screen Brightness +	Device Screen Brightness +	Device Screen Brightness +
fn + [brightness down]	Device Screen Brightness -	Device Screen Brightness -	Device Screen Brightness -
fn + [lock]	Screen Lock	Screen Lock	Screen Lock (iOS Only)
fn + [scroll lock]	Scroll Lock	Scroll Lock	

Note: The final function refer to the actual system.

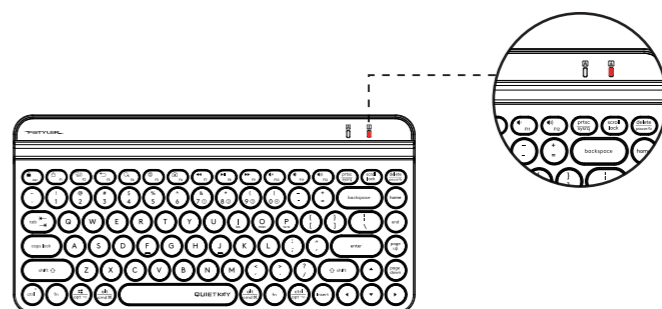
DUAL-FUNCTION KEY



Multi-System Layout

Keyboard Layout	Windows / Android (W / A)	iOS / Mac (ios / mac)
fn + [ios] [mac] [w/a]	Switching Steps: ① Choose iOS layout by pressing Fn+I. ② Choose MAC layout by pressing Fn+O. ③ Choose Windows / Android layout by pressing Fn+P.	
ctrl	Ctrl	Control ^
opt	Start	Option
alt	Alt	Command
alt	Alt (Right)	Command
ctrl	Ctrl (Right)	Option

LOW BATTERY INDICATOR



Flashing Red light indicates when the battery is below 10%.

SPECIFICATIONS



Model: FBK30
 Connection: Bluetooth / 2.4G
 Operating Range: 5~10 M
 Multi-Device: 4 Devices (Bluetooth x 3, 2.4G x 1)
 Layout: Windows | Android | Mac | iOS
 Battery: 1 AA Alkaline Battery
 Battery Life: Up to 24 Months
 Receiver: Nano USB Receiver
 Includes: Keyboard, Nano Receiver, 1 AA Alkaline Battery, USB Extension Cable, User Manual
 System Platform: Windows / Mac / iOS / Chrome / Android / Harmony OS...

Q & A

- Question** How to switch layout under different system?
Answer You can switch layout by pressing Fn + I / O / P under Windows | Android | Mac | iOS.
- Question** Does the layout can be remembered?
Answer The layout you used last time will be remembered.
- Question** How many devices can be connected?
Answer Interchange and connect up to 4 devices at the same time.

- Question** Does the keyboard remember the connected device?
Answer The device you connected last time will be remembered.
- Question** How can I know the current device is connected or not?
Answer When you turn on your device, the device indicator will be solid. (disconnected: 5S, connected: 10S)
- Question** How to switch between connected Bluetooth device 1-3?
Answer By pressing FN + Bluetooth shortcut (7 - 9).

WARNING STATEMENT



- The following actions may damage the product.
- To disassemble, bump, crush, or throw into fire is forbidden for the battery.
 - Do not expose under the strong sunlight or high temperature.
 - The discard of battery should obey to the local law, if possible please recycle it. Do not dispose it as household garbage, because it may cause an explosion.
 - Do not continue to use if severe swelling occurs.
 - Please do not charge the battery.



www.a4tech.com



Scan for E-Manual