



User manual


# Screen Capture Tool

[www.a4tech.com](http://www.a4tech.com)

## About "Screen Capture Tool"

Consists of value-added functions, such as: Screen capture, TutorPen, 16-in-One, multimedia, Internet, 4-way wheel, etc. Best software for you every need.

### Define the Mouse Buttons

1. Open main menu by double-clicking the icon  on your desktop
2. Select the function you preferred for each button from the pull-down function list.
3. Store / apply the setting by clicking "Apply".



The screenshot shows the 4Tech Screen Capture Tool interface. On the left, a diagram of a mouse has buttons 2, 3, 4, 5, and 6 labeled. A callout box points to button 6, labeled "DPI Shift Button". Below the diagram, text states: "Depending on models, key numbers may vary from above figure, only current key numbers will be applied." In the center, a hand is shown pressing a mouse button. Below this, text reads: "Key 6 Realtime Function Swapping" and "Hold left button and press right button orderly may switch to each function preset in key 6". On the right, a "Definition" dropdown menu is open, showing "2 Right Button" selected. Below it is a "Function list" with a scrollable menu containing options like "No Settings", "Screen Capture Tool", "TutorPen", "Keyboard...", "Mouse", "Internet", "Multimedia", "Open a file", "Key Combination", and "Office Sets". A callout box points to the "Function list" with the text "Function list". Another callout box points to the "Save / apply the setting" button at the bottom right. The bottom left corner shows "Version 11.04V22".

## Set 5 functions in ONE button

You can define 5 functions in mouse button **6**, such as Screen capture, TutorPen, Keyboard/Mouse Simulation, 16-in-One, 4-way Wheel, etc.

### How to shift / apply 5 functions

- 1) Press/hold the left button and click the right button to shift 5 chosen functions, and the function info will pop up (as below figure).



- 2) Press mouse button **6** to perform the chosen functions.

## Capture Screen

### How to set:


Select "Screen Capture" from the function list of the button **6**.

### Usage:

- 1) Press/hold the mouse button **6** and drag the mouse cursor to the opposite corner and form a box around your object.



### Edit Tool

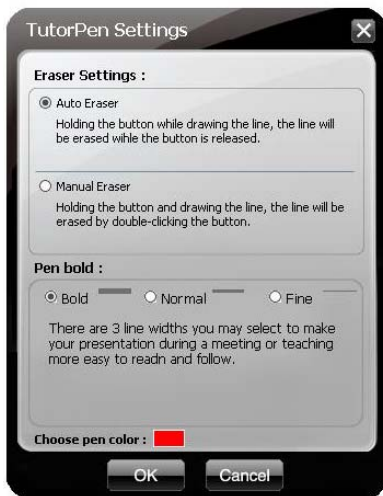
- 2) Click  on "Edit Tool" and paste (Ctrl+V) it to any document or during online chatting. after editing your screenshot (Video capture is only supported on Vista or above)

## Use the Mouse for your Presentation

### TutorPen

Press/hold the defined button to draw a line to remark the objects on your screen. You can eliminate the lines by double or triple click on the defined button.

You may set the line width in the "TutorPen Setting".



### Open a file or a program

You may set up the defined buttons in association to the documents, programs or shortcuts required during your presentation. Just press the buttons to open them instantly.

## Gesture 16-in-1


Select "Gesture 16-in-1" from the pull-down function list, the setup box will pop up.

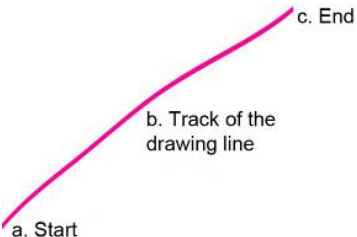

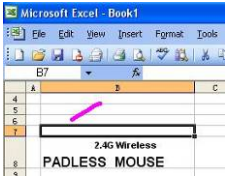
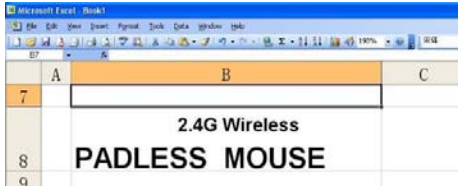
You may set up 16 user-friendly functions/commands to the defined gesture button **2** or **6**, including the functions of Keyboard/Mouse simulation, Open a file, Office, Text, Multimedia, Internet, etc.

**Usage:** Press/hold the gesture button **2** or **6** and draw a line in the direction described to perform the preset functions/commands.




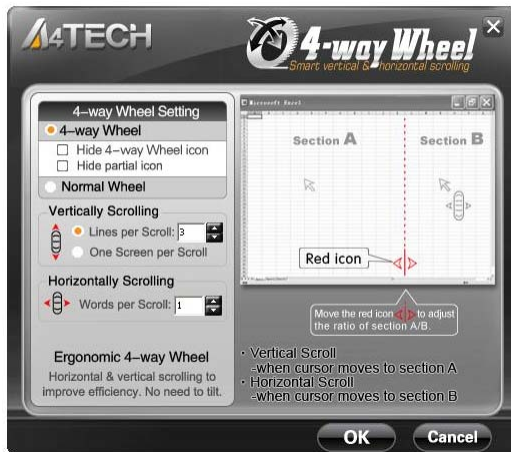
**Setup Box**

**Example:** Using  as "Zoom In" by default, just press/hold the Gesture button **2** or **6** and draw a line as shown below, and then release the button, the picture or the document will be zoomed in immediately.

 <p>a. Start</p> <p>b. Track of the drawing line</p> <p>c. End</p>	<p>a. Press/hold the gesture button <b>2</b> or <b>6</b></p> <p>b. Draw the line as the  arrow direction</p> <p>c. Release gesture button <b>2</b> or <b>6</b></p> <p>Then the picture has been zoomed in.</p>
<p>Original</p>	<p>Zoom In</p>
	

## Change the Mouse Wheel to 4-way Wheel

Click the icon  at the system tray and select "4-way Wheel".



- 1) The 4-way Wheel splits the working screen into 2 areas A and B as shown on the right. When the cursor locates in area A, the wheel will perform vertical scrolling; when the cursor locates in area B, the wheel will perform horizontal scrolling
- 2) You may move the Red split icon to change the ratio of area A and B.

**(Note:** If the "Normal Wheel" is selected, the wheel will perform as a normal mouse wheel, and "4-way Wheel" function won't be launched.)



## **Keyboard/Mouse Simulation:**

You may setup mouse button to simulate a keyboard's keystroke or a key combination with "Win", "Ctrl", "Shift" and "Alt". Also you may setup mouse button to be one of "mouse left button, mouse right button, wheel up and wheel down".

## **Key Combination:**

Quickly execute hotkey commands, such as: Cut, Copy, Paste, Delete, Search, Select All, Redo, Undo, New File, Open File, Save File, Print, etc.

## **Office Sets**

Quickly execute other office commands, such as: "Zoom In, Zoom Out, Paste Text, Double Click and Triple click".

## **Internet & Multimedia:**

Quickly execute Internet / multimedia commands, such as: Backward, Forward, Stop, Refresh, Search, My Favorite, Web Browser, E-mail, Media Player (Open), Previous, Next, Stop, Play/Pause, Mute, Volume+, Volume, etc.

## **Product Support**

Need more technical support? Please go to: <http://support.a4tech.com/> and our support team will respond within 72 hours.

\*\*Features and specifications of all A4TECH products are subject to change without notification.