



User Manual

16-in-One Software

www.a4tech.com

THIS DEVICE COMPLIES WITH PART 15 OF THE FCC RULES. OPERATION IS SUBJECT TO THE FOLLOWING TWO CONDITIONS: (1) THIS DEVICE MAY NOT CAUSE HARMFUL INTERFERENCE AND (2) THIS DEVICE MUST ACCEPT ANY INTERFERENCE RECEIVED, INCLUDING INTERFERENCE THAT MAY CAUSE UNDESIRE OPERATION.

Federal Communications Commission Requirements

The equipment has been tested and found to comply with the limits for Class B Digital Device, pursuant to part 15 of the FCC Rules. These limits are designed to provide reasonable protection against harmful interference in a residential installation. This equipment generates uses and can radiate radio frequency energy and, if not installed and used in accordance with the instruction, may cause harmful interference to radio communication. However, there is no guarantee that interference will not occur in a particular installation. If this equipment does cause harmful interference to radio or television reception, which can be determined by turning the equipment off and on, the user is encouraged to try to correct the interference by one or more of the following measures:

- Reorient or relocate the receiving antenna.
- Increase the separation between the equipment and receiver.
- Connect the equipment into an outlet on a circuit different from that to which the receiver is connected.
- Consult the dealer or an experienced radio/TV technician for help.

THE CHANGES OR MODIFICATIONS NOT EXPRESSLY APPROVED BY THE PARTY RESPONSIBLE FOR COMPLIANCE COULD VOID THE USER'S AUTHORITY TO OPERATE THE EQUIPMENT.

This device complies with Part 15 of the FCC Rules. Operation is subject to the following two conditions:

- (1) This device may not cause harmful interference, and receiver.
- (2) This device must accept any interference received, including interference that may cause undesired operation.

FCC Radiation Exposure Statement

The equipment complies with FCC radiation exposure limits set forth for uncontrolled equipment and meets the FCC radio frequency (RF) Exposure Guidelines in Supplement C to OET65. The equipment has very low levels of RF energy that it is deemed to comply without testing of specific absorption ratio (SAR).

About "16-in-One" software

Consists of value-added functions, such as: Multi-link management, DPI / report rate setting, 4-way wheel, power-saving management, battery status indication, etc.

Best software for your every need!

Define the Mouse Buttons

1. Double-click the icon "16" at the system tray to open the "Main Menu".
2. Select the function you preferred for each button from the pull-down function list.
3. Store and apply the setting by clicking "Apply".
4. Click "Exit".



Gesture 16-in-1


Select "Gesture 16-in-1" from the pull-down function list of the mouse RIGHT button ②, the setup box will pop up.

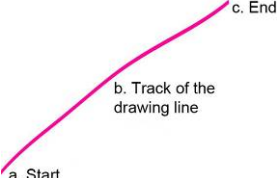

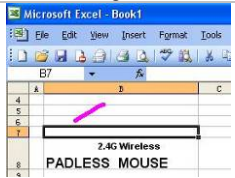
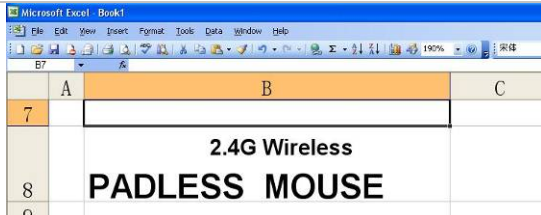
You may set up 16 user-friendly functions/commands to the defined gesture RIGHT button, including the functions of Keyboard/Mouse simulation, Open a file, Office, Text, Multimedia, Internet, etc.

Press/hold the gesture RIGHT button and draw a line in the direction described to perform the preset functions/commands.




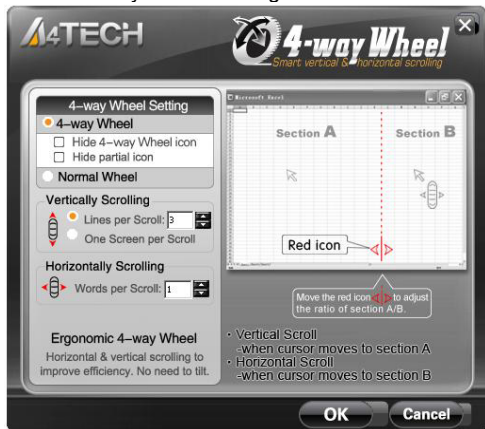
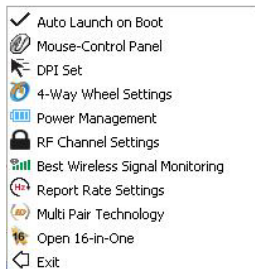
Setup Box

Example: Using  as “Zoom In” by default, just press/hold the gesture RIGHT button and draw a line as shown below, and then release the button, the picture or the document will be zoomed in immediately.

	<p>a. Press/hold the gesture RIGHT button b. Draw the line as the  arrow direction c. Release gesture RIGHT button Then the picture has been zoomed in.</p>
<p style="text-align: center;">Original</p> 	<p style="text-align: center;">Zoom In</p> 

Change the Mouse Wheel to 4-way Wheel

Click the icon  at the system tray and select "4-Way Wheel Settings".

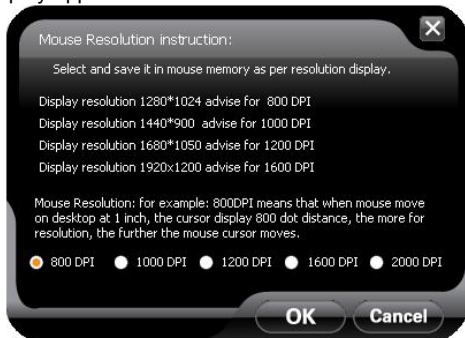


- The 4-way Wheel splits the working screen into 2 areas A and B as shown on the right. When the cursor locates in area A, the wheel will perform vertical scrolling; when the cursor locates in area B, the wheel will perform horizontal scrolling
- You may move the Red split icon to change the ratio of area A and B

(Note: If the "Normal Wheel" is selected, the wheel will perform as a normal mouse wheel, and "4-way Wheel" function won't be launched.)

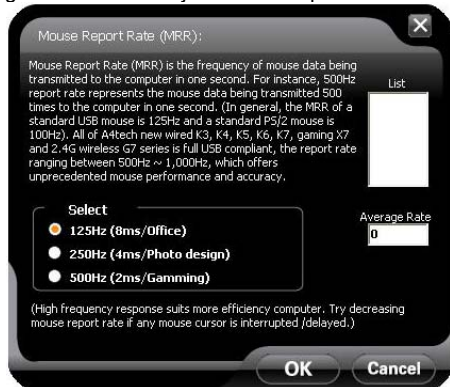
Adjust Mouse Sensitivity

Select "DPI Set" in tasklist to adjust mouse sensitivity among 800 - 1000 - 1200 - 1600 - 2000 CPI depending on different display applications.



Adjust Mouse Report Rate

Select "Report Rate Settings" in tasklist to adjust mouse report rate.



Connect New Mice/KBs

The multi-link receiver can link to 3 sets Mice/KBs for specified applications, such as presentation, meeting or teaching. Please follow the steps to finish the ID pairing of the new mice/KBs.

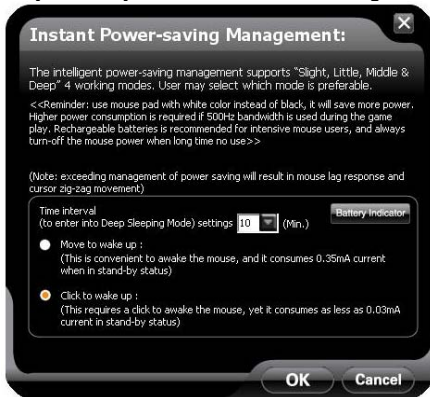
1) Click the icon "16" at the system tray and select "Multi-link Technology".



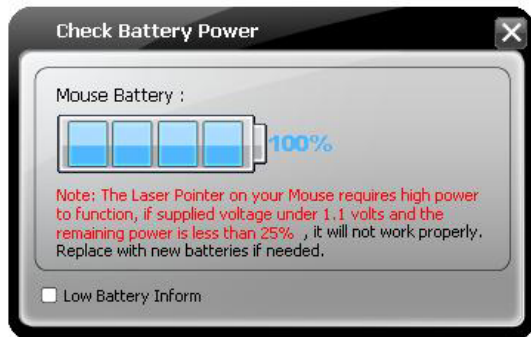
2) Follow the on-screen instructions to finish the ID pairing and manage the paired devices.

Power-saving Management

1. Click the icon "16" at the system tray and select "Power Management".




2. Click "Battery Indicator" to see the battery power status.



3. Low battery informs will pop up at the right corner of your screen when battery low.



Additional tasks of G7 16-in-One

Click the icon  at your system tray, the full task list of 16-in-1 will pop up as shown below:



Auto Launch on Boot

If this task is selected, 16-in-1 will auto-execute when the system boots up.

Mouse-Control Panel

Open "Mouse Properties" of your Windows system, e.g., you may setup mouse pointers and other often-used mouse settings.




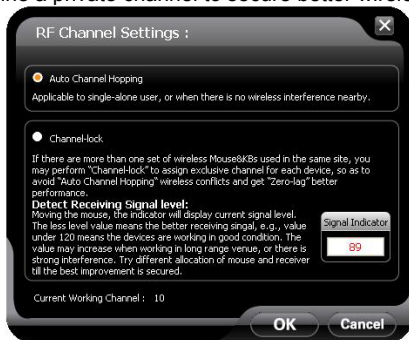
Mouse-Control Panel

Notice:


To ensure a good wireless connection, please read below instructions for your reference:

1. Avoid channel confliction from auto channel hopping

- 1) Click the icon  at the system tray and select "RF Channel Settings".
- 2) Select "Channel-lock" to define a private channel to secure better wireless connection quality.



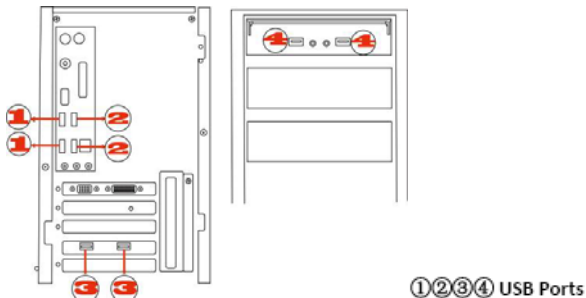
2. Avoid interference from iron panel of PC

Click the icon  at the system tray and select "Best Wireless Signal Monitoring".



If the wireless mouse is not working smoothly due to wireless conflicts, try below methods to get improvement.

- A) Please plug the Multi-link receiver into ③、④ to avoid shielding wireless signal instead of ①、②.



- B) Use USB extension cable to position the Multi-link receiver at a distance to prevent electromagnetic interference from devices.

Troubleshooting & FAQ

If the mouse is not working:

1. Make sure the mouse power is on
2. Try another USB port
3. Ensure the Multi-link receiver is inserted
4. Check battery and battery installation

Product Support

Need more technical support? Please go to: <http://support.a4tech.com/> and our support team will respond within 72 hours.

**Features and specifications of all A4TECH products are subject to change without notification.